

Migl House: The Migl house was constructed in 1890



by the family of František and Johana Migl, with additions being made in the 1920s. In 2000 Jim Jasek, one of the Migl descendants, obtained ownership of the house and donated it to TCHCC. The Migl family restored the house and moved it to the current site. The house displays Migl family memorabilia along with authentic furniture and items and is maintained by the Migl family.

Log Crib: The authentic circa 1904 double log corn crib



with dog trot was constructed with hand hewn logs which were joined with simple saddle notching. A central passage-way down the middle allowed for easy loading/unloading of wagons to or from a crib on either side. The Log Crib was donated by Hilda Fajkus and Sylvia Ratcliffe of Cistern. It was moved to the site by Káňa Brothers Moving Company and restored by brothers Ed, Ernest, David and Robert Vašek of Plum and Robert Stall of Smithville with replacement logs donated by Vickie Matocha and Jeb Pape.

Janak Barn & Texas Czech Agriculture

Museum: This replica of an original early 1900s barn



was built in the fall of 2013. Funding was made possible by grants from Rita Huebner Janak, Sanford Schmid, and the City of La Grange Economic Development. The Barn also houses the *Texas Czech Agriculture Museum* and was dedicated in October of 2014. The Janak Barn is an example of the productivity and prosperity for a Texas-Czech farm family. The displays tell about early farming practices and show how the barn was the center of the farm.

Sanford Schmid Amphitheater: Thanks to an initial grant by the LCRA and a matching grant by La Grange resident Sanford Schmid, the Amphitheater was built in 2000. The 5,500 square foot facility is built in a Texas Czech style and includes an open stage, dressing/meeting rooms, restrooms, and prop storage area. Music is very special in the life of Czechs. The Czech saying “*Muziky, Muziky*” adorns the top of the stage which means “*Music, Music*”. The facility is available for rent and used for musical performances, theatrical plays, presentations and outdoor weddings.



GROUP TOURS ARE WELCOME:

Please schedule in advance for groups of 10 or more.

\$3 per person - Main Center Tour only.

\$5 per person - Full Tour: Includes Main Center and Village.

Lunch is offered for scheduled tours only. Call for details.

Contact us for scheduling:
TCHCC, P. O. Box 6, La Grange, Texas 78945
1-888-785-4500 • email: info@czechtexas.org
Website: www.czechtexas.org

No Pets Allowed in the Buildings.

MEMBERSHIP

Join the Texas Czech Heritage & Cultural Center with a membership or gift a membership.

ANNUAL SUSTAINING MEMBERSHIP

January 1—December 31

Benefits: Newsletters & Annual Calendar

- \$50 Individual
- \$75 Family
- \$200 Non-Profit Organization
- \$500 Corporate
- \$2000 Lifetime

FRIENDS OF TCHCC

How to get Involved

You can make a difference in preserving Czech heritage for future generations

1. MEMBERSHIP

Keep up-to-date with all the events

2. VOLUNTEER

Meet people, discover and learn about Czech heritage and history

3. DONATE

Your gifts are appreciated and used to support the daily care of TCHCC as well as the development of educational programs and displays.

DONATION: \$ _____

Name: _____

Address: _____

City/State/Zip: _____

Phone: _____

VITAMÉ VÁS

WELCOME



A WALKING TOUR OF THE TEXAS CZECH HERITAGE & CULTURAL CENTER

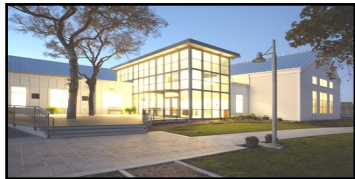


**250 West Fairgrounds Road
La Grange, Texas 78945
888-785-4500**

www.czechtexas.org



TCHCC Main Center/Office/Library/Museum/Archives Building.



The Kolibá Lobby invites visitors in to the TCHCC Main Center building which houses the offices, Hanslik Hall Dining & Meeting Room, the Willie and Mardi Kopečky Gift Shop, KJT Conference Room, the Bill and Betty Melnar Library, where genealogy and historical research can be accomplished, and the *Nás Nový Domov (Our New Home) Museum* which displays the many artifacts and memorabilia that have been donated to TCHCC and tells the story of the early Czech-Texans. This Main Center building, designed by architect Roger Kolář, was completed in October of 2009. The building has a contemporary glass entrance representing the beacon of light that attracted the settlers to Texas and also brings to mind the 19th century farm houses, halls and buildings, but is not a duplication of them. At the entrance, paving stones, brick memorials and the Immigrants' Wall honors family and friends. A memorial brick walk leads to the three flags which our Czech ancestors treasured: the United States Flag, the Flag of the Czech Republic, and the State of Texas Flag.

Kalich House & Czech Music Museum of Texas:

This historic 1890s Texas-Czech farm house was donated by Peggy Kalich of Schulenburg. The house was moved to the site on June 22, 2000 by Káňa Brothers, Inc. House Leveling and Moving and then transformed into the Visitors' Center which temporarily housed the office, gift shop, library and display area. The restoration of the house took approximately 3,109 hours with some eighty individuals ranging in age from two to eighty volunteering their time toward this effort. Major restoration of the roof and porches was done by Robert Slovak Construction and volunteers from Ennis, TX. It served as the Visitors' Center until 2009 when the main building was completed. It is now TCHCC's Czech Music Museum of Texas displaying music memorabilia in four separate musical genres: Classical Music of Czech Composers, Spiritual/Liturgical Music, Folk Music and Dance, and Polka/Czech Brass Music.



Wallachian Bell and Belfry:



In 1995, the Czech Republic participated in the annual Festival of American Folklife in Washington, D.C. The materials were transported from Rožnov, Czech Republic to erect the belfry at the festival site. The Czech Republic decided that the belfry should be given to the CHS of

Texas which in turn donated the belfry to TCHCC. The belfry was placed on the grounds in 2003. In 2014, the bell, which was cast in 1995 in the Czech Republic, was removed from the tower, cleaned and placed in a showcase in the TCHCC Melnar Library for viewing. A replica bell was then hung in the tower.

SPJST Lodge #19 Velehrad:



The Lodge was moved from its original site in northern Lavaca County in the Velehrad community to TCHCC on November 9, 2017 by Káňa Brothers, Inc. Beginning in the spring of 2018, SPJST Foundation directors started making repairs. By the end of 2018,

the building was ready to be painted both inside and out, including sanding and refurbishing the longleaf pine floor. Efforts were made with the selection of paint colors and the refurbishing of the furniture to match the original condition much as it would have appeared in the summer of 1897 when SPJST (*Slovanská Podporující Jednota Státu Texas*) was established and Lodge #19, Velehrad received its charter as one of SPJST's first 25 charter lodges. The Grand Re-Opening of the Lodge at TCHCC was held on May 19, 2019. This celebration represented the continuation of the restoration efforts which commenced in 2002. In the spring of 2006, the exterior of the building was restored by members of the SPJST District 6 Cemetery Association. All three of these efforts contributed to rescuing this historic hall from obscurity.



Hospoda (tavern) and General Store:



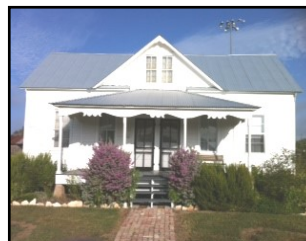
The main building was donated by Roy Buček of Schulenburg and a side room for a general store was added on by volunteers. A tavern and store was part of an early Texas-Czech village and displays the place where immigrants would meet, get mail and information of the outside world and purchase necessary staple goods.

Hoelscher Haus:



This house, built in 1880 by Anton & Elizabeth Bruese Hoelscher, was a bedroom/parlor addition to their original house. Donated by Henry & Esther Hoelscher of Houston, the house was moved to TCHCC for the home of the Polka Lovers' Club of Texas Museum. It can be viewed by appointment only with the Club.

Hluchanek-Salaš House:



This house was donated and moved to TCHCC by Donald and Betsy Chovanec in 2008. Frank Hluchanek built this house in the Holman area of Fayette County in 1890. In 1915, Frank converted the old combination kitchen-dining room into a dining room and added a new kitchen. He sold the house to Anton and Mary Špaček Salaš in February of 1940. They updated the kitchen and added a bathroom in the enclosed porch. After moving the house to TCHCC, the kitchen and dining room was completely renovated. The added bathroom was torn out and the porch was renovated back to a wash room. The house was furnished and decorated to reflect the lifestyle of a middle class rural Texas-Czech farm family from 1890-1930s.

Sladek Smoke and Wash House: The Smoke & Wash house was funded by the children of E.A. & Frances Sladek of La Grange. It resembles many of the important out buildings of the time. The Smoke House was a vital part of living. Without electricity for refrigeration, meats were smoked and cured for preservation. The Wash House functioned as a place to wash clothes, wash and can vegetables, and store canned foods along with other important household necessities when houses only consisted of the main rooms.

Český Noviny Muzeum- Czech Newspaper

Museum: The museum is a replica of an early print shop and tells the story of the many Czech newspapers printed across Texas. Also included in the museum is a Kluge printing press,



Fairbanks-Morse 6hp 1-cylinder gas engine, and related equipment used to print those newspapers. A significant part of the history of the settlement of Czechs in Texas is the story of their newspapers. Their desire to communicate and stay abreast of the news resulted in the founding of newspapers in their communities and in their Czech language. Some lasted only a few years, but others continued and eventually became newsletters or journals written in the English language. The press and type were part of a print shop in Iowa that printed the first Czech newspaper in the US and were donated to TCHCC in 2005 by John Kuba after he inherited the shop and equipment. Adolph Nový and crew moved the equipment to Ennis, TX where it was cleaned and repaired. In the spring of 2018, construction began on the museum with an initial donation from the Richard & Molly Černošek Family. The museum was completed in the fall of 2018 and displays were completed just in time for the March 16, 2019 dedication. With the help of volunteers, the shop now comes alive with motion and sounds when the engine and press are running.

Zapalač Sawmill:



This 1895 De Loach No. 1 Mill was owned and operated by the Vinc B. Zapalač family from the Ellinger area on the Colorado River in Fayette County. Donated by Donna Zapalač Mueller, the mill represents the industrial businesses and entrepreneurships of the Czechs. The project was funded by a grant from the Dickson-Allen Foundation along with various versions of help from others. The mill restoration was completed in 2015, and is a working original maintained by the South Texas Wheel Spinners & Crank Twisters Antique Farm Equipment Club. The display also showcases early life on the Zapalač family farm. The mill is operated at the May Fest and Heritage Fest each year and on school tours.